

# Aircard Troubleshooting Flow Chart

**Recommended Tools**  
 1x 1.0A slow blow fuse (for SL1600)  
 1x 1.5A slow blow fuse (for SL4800)  
 1x Spare SmartLine panel

**Recommended Cell Service Maps**  
<https://map.coveragemap.com/signal-strength>  
<https://www.antennasearch.com/>

**Part Numbers**  
 Contact your local Weathermatic distributor for pricing

AT&T Aircard (Standard)  
 SL-AIRCARD-M1NA

AT&T Aircard, Flow  
 SL-AIRCARDFLOW-M1NA

AT&T Aircard, 50 ft Cable  
 SL-AIRCARD-M1NA-EXT

AT&T Aircard, Flow with 50ft Cable  
 SL-AIRCARDFLOW-M1NA-EXT

Aircard Antenna (Standard)  
 SL-ANT-LTE

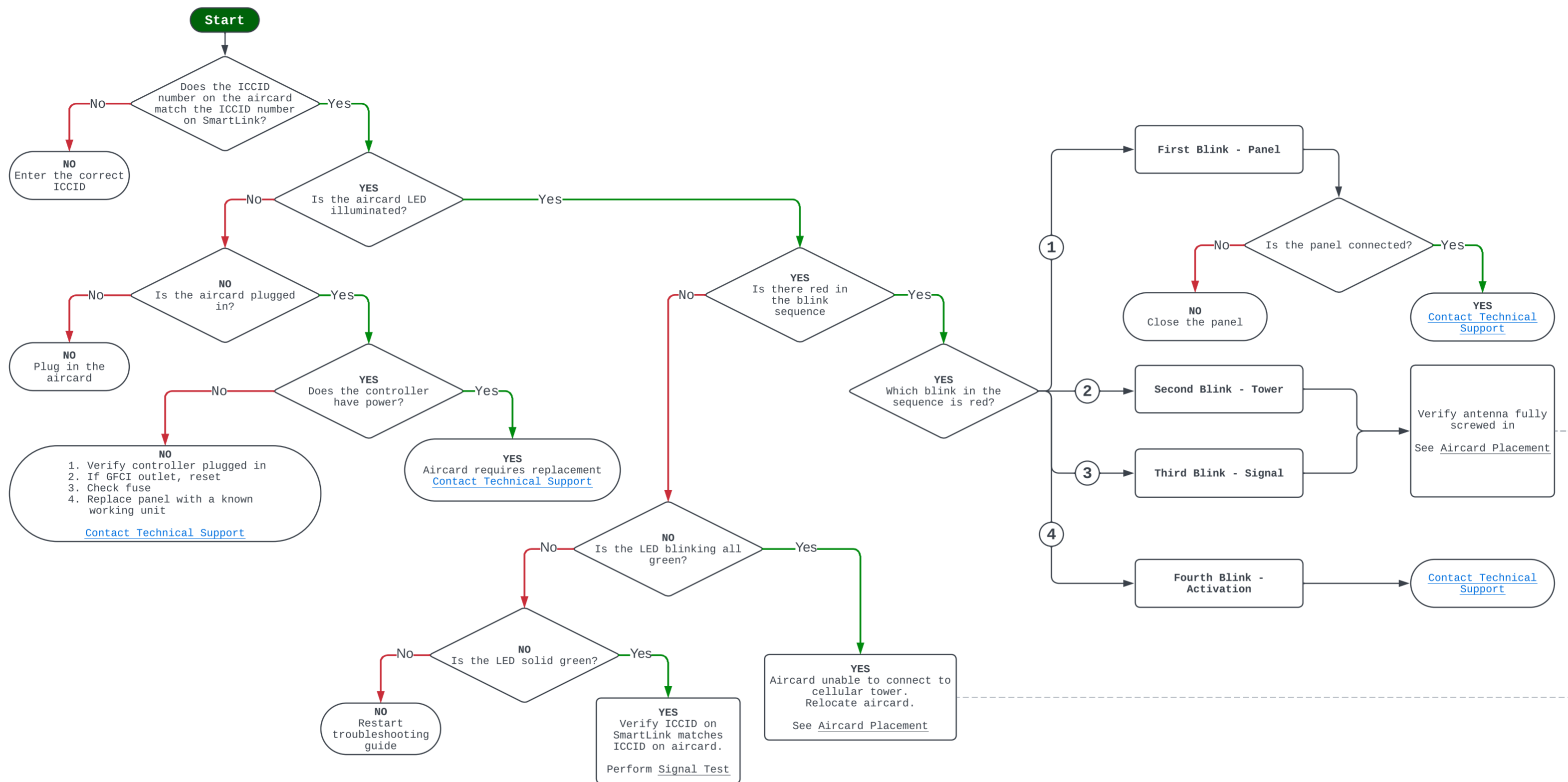
Aircard Antenna, External High Gain  
 SL-HG-ANT-LTA

For non-AT&T serviced aircards, please [contact technical support](#)

**Signal Requirements**

RSSI (Received Signal Strength Indicator) : -50dBm to -75dBm (100%-50%)

BER (Bit Error Rate) : less than 6%

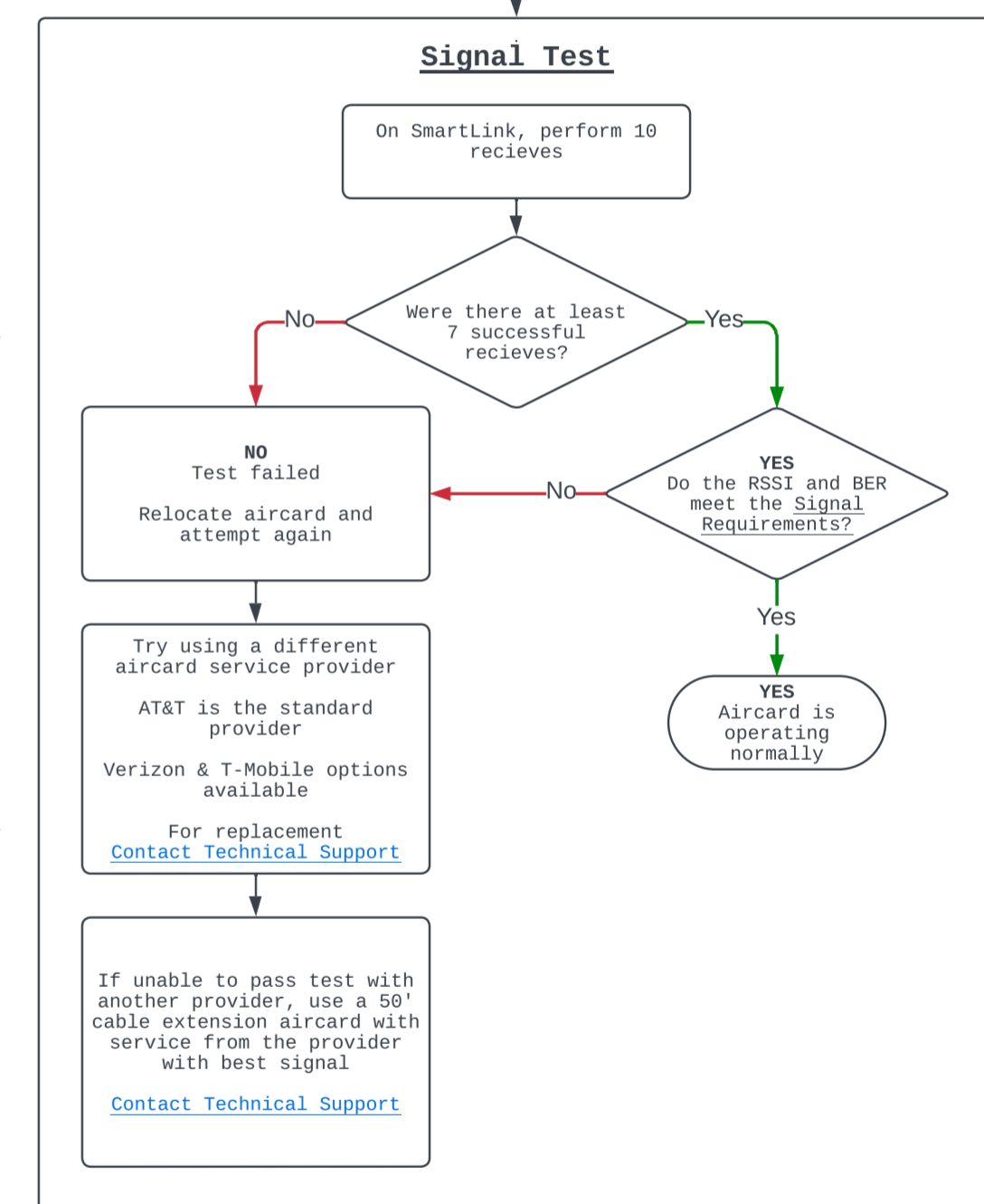


**Aircard Placement**

For optimal signal, aircard should be installed:

- As high as possible
- Antenna on the bottom of the aircard
- Away from sources of electrical interference (transformers, electrical boxes, etc.)
- If installed in a metal pedestal, aircard must be equipped with external antenna  
 Part Number: SL-HG-ANT-LTA

Perform [Aircard Test](#)



SCAN FOR MORE

